

Hunterdon County Library
Director's Report
December 2008

Extension Services

The new bookmobile debuted on Sunday, December 7th, as it participated in the Flemington Holiday Parade, where it received lots of applause and compliments. It had its inaugural run on Tuesday, December 9th to Bloomsbury. The staff reported that it was very happily received there; again with lots of compliments about both the exterior and the interior layout. Families came in together, and the staff reported that a couple of fathers, who normally wait in the car, also came in to see the new vehicle. One signed up for a new library card that evening. The staff reported that they were happy to have power to climb the hills without the engine straining as was the case with the old vehicle. We look forward to expanding our service to the residents in the new year, now that we have this reliable new vehicle.

The Extension Services department is responsible for withdrawing books that are no longer needed from all of the libraries, including the small community libraries. We set aside all of the children's books that are still in usable shape, and allow the school librarians to come in and take any that they can use for their school libraries. This has been a long standing practice, and is a great way to reuse resources and to share with the schools whose own budgets are generally small.

North County Branch Teen Cafe

Teen Café has had a very successful season of fall programming with attendance skyrocketing. An average of 22 young people have attended the first three events of the school year (Game Night, Spooky Campfire, and Pirate Adventure). These programs have been planned and carried out by a 12-member Teen Board and assisted by 3 Teen Café alumni.

On Wednesday, December 10th, at 7:00 pm teens gathered to build candy houses. This has become a Teen Café December tradition. In the past, teens have built and decorated gingerbread houses, chocolate houses, and this year (with a sensitivity to the faltering economy) good ol' graham cracker houses, which, of course, were loaded with good things to eat!

Looking toward the New Year, the Teen Board is already planning a Chinese New Year event for February 2009 and hopefully, will continue the annual karaoke program in January.

Finally, Teen Café is thrilled to have received a \$500 donation from the Kohl's Cares for Kids program under the auspices of the Kohl's Department Store. (This donation was initiated in conjunction with the Hunterdon Radio Theatre, who has worked with Teen Café on several occasions.) Kohl's is a strong supporter of communities nationwide, and through this specific program partners with nonprofit organizations to improve educational opportunities and enhance community programs for young people. The monies from this generous gift will be used to support future Teen Café programs.

Circulation Dept.

The self-check terminal is up and running across from the circulation desk at HQ. All of the bugs have been worked out and patrons who use it seem to like it. Circ. Dept. Head Lee Hughes will be working with Jim Thatch to promote and enhance the visibility of this new service.

Youth Services

A YS librarian accompanied the bookmobile at the annual Touch-a-Truck event on Saturday, Nov. 8th. The bookmobile was a big hit and the YS department sent along a special collection of truck books for all the young patrons to enjoy.

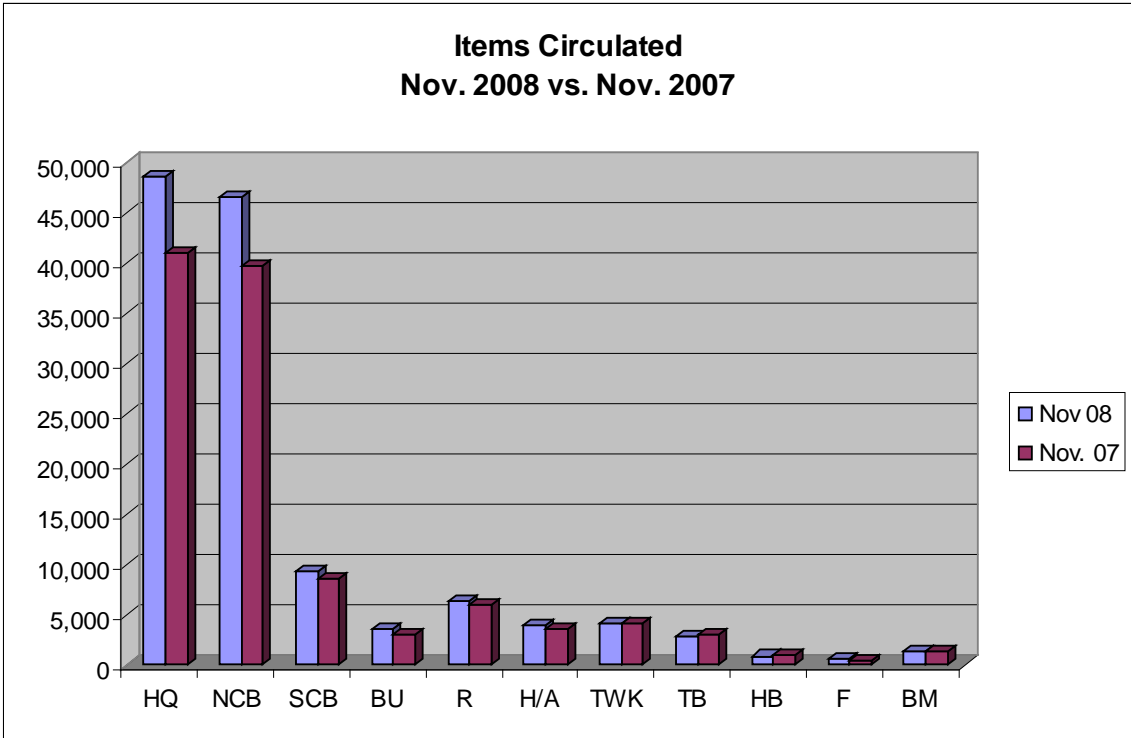
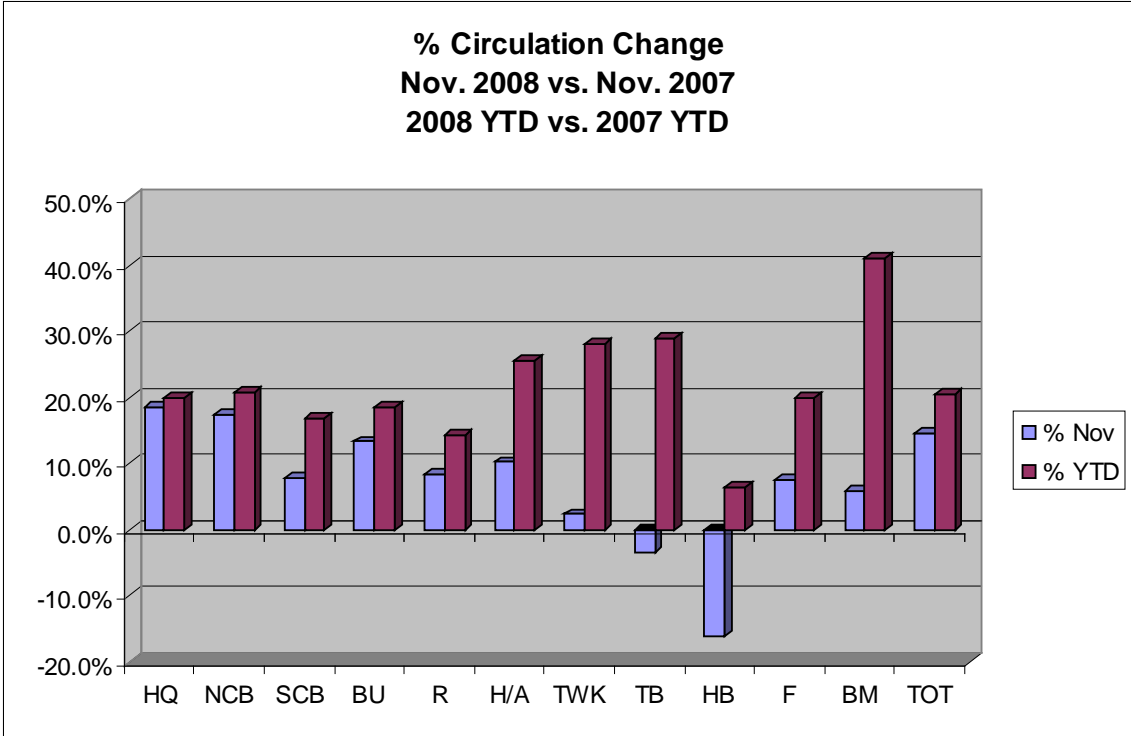
Storytimes continue to be filled at all locations. They will end on Dec. 20th and resume in mid-January.

YS has had a lot of tours - especially Cub Scouts and Girl Scouts. The groups are smaller than school tours, but everyone - including the parents - enjoys learning about the library and seeing what goes on behind the scenes.

Circulation Statistics

Circulation for the first eleven months of 2008 (1,483,649) exceeds all of 2007 (1,331,982) by 151,667 (11.4%)! Overall circulation remains up 20.5% compared to last year.

	Nov 08	Oct 08	% Change	Nov. 07	% Nov	YTD 08	YTD 07	% YTD
Headquarters	48,668	47,198	3.1%	41,038	18.6%	545,118	454,163	20.0%
North County	46,682	46,557	0.3%	39,755	17.4%	533,564	441,379	20.9%
South County	9,257	8,715	6.2%	8,590	7.8%	106,544	91,257	16.8%
Bunnvale	3,482	4,062	-14.3%	3,073	13.3%	41,447	34,957	18.6%
Readington	6,436	7,033	-8.5%	5,941	8.3%	79,749	69,789	14.3%
Holland/Alexandria	3,940	4,259	-7.5%	3,576	10.2%	49,603	39,488	25.6%
Tewksbury	4,147	4,558	-9.0%	4,053	2.3%	52,516	40,982	28.1%
Three Bridges	2,891	4,078	-29.1%	2,997	-3.5%	38,486	29,827	29.0%
High Bridge	878	1,152	-23.8%	1,047	-16.1%	12,196	11,459	6.4%
Frenchtown	525	587	-10.6%	488	7.6%	7,169	5,978	19.9%
Bookmobile	1,385	1,646	-15.9%	1,310	5.7%	17,257	12,228	41.1%
Total	128,291	129,845	-1.2%	111,868	14.7%	1,483,649	1,231,507	20.5%



**Items Circulated through End of Oct.
2008 YTD vs. 2007 YTD**

