

Hunterdon County Library  
Director's Report  
January 2008

Extension Services

The bookmobile was out of service for the month of December for installation of a new air conditioning system. It was returned to the library as scheduled in time for its first run of the New Year to Hampton on January 3<sup>rd</sup>. The Board of Chosen Freeholders will be voting on purchase of a new bookmobile at their January 15<sup>th</sup> meeting.

We have continued to encourage the member libraries to send back a lot of weeded materials this month, since we have staff available to delete the materials from our computer system. This has helped all of the libraries with their overcrowding issues. We have prepared a schedule for each library to have a specific month to return additional items throughout the year, so that the workflow will be more even for everyone.

Polaris

We are preparing to upgrade to the new software release, Polaris 3.3. We will be reviewing the changes and practicing with the Training module which is being installed on desktops now, which permits performing all the circulation functions with our own patron and record data, without really changing anyone's records. In addition to all of HCL's staff, all member library staff will be asked to come to Headquarters to be trained as well. We believe that the changes in circulation procedures are modest enough that training will go quickly and smoothly and that we will be able to implement the upgrade within about a month.

We were pleased to learn that Polaris was voted as the best library automation vendor in an international survey!

2008 Grant

The Hunterdon County Library received a grant of \$4,500 from the Hunterdon County Cultural and Heritage Commission for 2008. This was an increase from what HCL received in 2007 and a good indicator that the success of our library's programs is being noticed by the Committee. The competition for grant money has greatly increased over the past few years and the HCL's 2008 grant award is the first time in a while that our grant did not decrease from the year before.

Treasure Chest Wins FOLUSA Award!

The Treasure Chest "honoring" the Friends of HCL that was on display in the lobby of HCL Headquarters has won a national award (including a check for \$250) from FOLUSA (Friends of Libraries USA)! Our Friends group was one of five nationally to win this award. The display was created by Reference Librarian Karen Kilpatrick with assistance from Jim Thatch. The Friends of HCL will be highlighted in an upcoming FOLUSA newsletter and Karen will be traveling to the ALA Midwinter Convention in Philadelphia on January 14<sup>th</sup> to accept the award at an Author's Tea.

### Movie Series

The PR Committee is in the process of planning a film series for our patrons. In addition to showing a film, refreshments would be offered as well as an introduction to the film with background information. A trivia contest to win a pair of movie tickets is also being considered. The experimental series is expected to be shown on afternoons, beginning sometime in March. If the series proves successful, the Library may look into the possibility of obtaining a year-long movie license to show films at HCL and NCB.

### Youth Services Department

The Youth Services Dept. had a very successful Books For Kids event. Every year they collect new books for newborn through high school age children. More than 1,000 books were collected countywide in December. They were sorted and stored at Headquarters. Representatives from the American Legion picked them up and distributed them to local children in time for the holidays.

The closet organizer was installed at the Headquarters YS office. This was fully funded by the Friends of HCL! The County's Building & Maintenance Dept. did a fine job preparing the space for us. The YS staff is thrilled with the results.

### Reference Department

Linda Reynolds assembled ten new book displays throughout the library in December. The wide variety of displays included: *Tis the Season Staff Picks* (including CDs and DVDs); *Jolly Holidays* (fiction and nonfiction versions); *Spanish language bestsellers*; *Little Books*; *Armchair Travel*, and *Foods to Warm You on a Frosty Evening*. Of the 545 items selected for these displays, about 240 were checked out. The main level display areas are the hot spots. However, topic also seemed to play a role in borrowing frequency. One display that seemed to have both positive factors was *January is Financial Wellness Month* which was assembled on December 27th on the tables across from the circulation desk. Within a few days one book was left of the original two dozen. The display has had to be completely replenished twice within its first nine days. The current display on the main level's second hot spot (next to the CDs) is Les Moore's *Not Quite Bestsellers, These Books Got Rave Reviews*. This display features recent fiction and nonfiction books which received critical acclaim but didn't quite achieve bestseller status.

Karen Kilpatrick has been putting together a display a month since October. Her ideas and artwork have been terrific. Terry Edwards is a primary force behind all the displays supporting *Festive Fridays* and continuously supports Linda Reynolds's coordination efforts. Cindy Knight has put together several displays that have promoted some of our world languages materials.

HQ Reference staff met on December 6<sup>th</sup> to discuss a variety of topics, including customer service, donations of materials, roaming reference, and the Internet policy.

On December 7<sup>th</sup>, Rosemary Francone gave a brief tutorial on Microsoft Word for the HQ Reference staff. The objective was to help staff to be better prepared to assist patrons. The tutorial will be repeated at the NCB.

Reference personnel from Headquarters have been working at the North County Branch a few days each week to help with coverage there. To date it has been a positive experience for all concerned.

### North County Branch

Sign-ups for programs at NCB are off to a great start. *Knitting with Donna* has over sixty registrations for the January 15<sup>th</sup> program. NCB's Donna Kahlke will demonstrate the latest and best choices for yarns, needles, beads, and projects. The response to the Karen Zumbrunn Jazz Trio on January 17<sup>th</sup> has also been strong. Karen will be treating everyone to a great evening of jazz with piano, vocals, drums and bass.

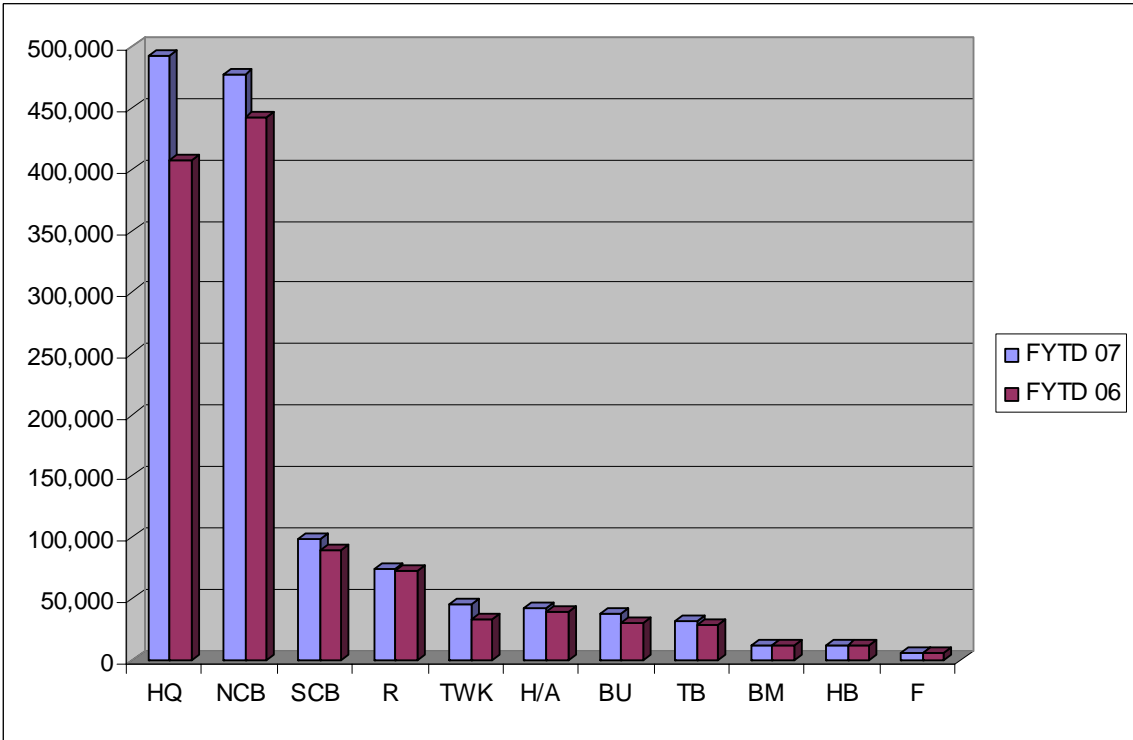
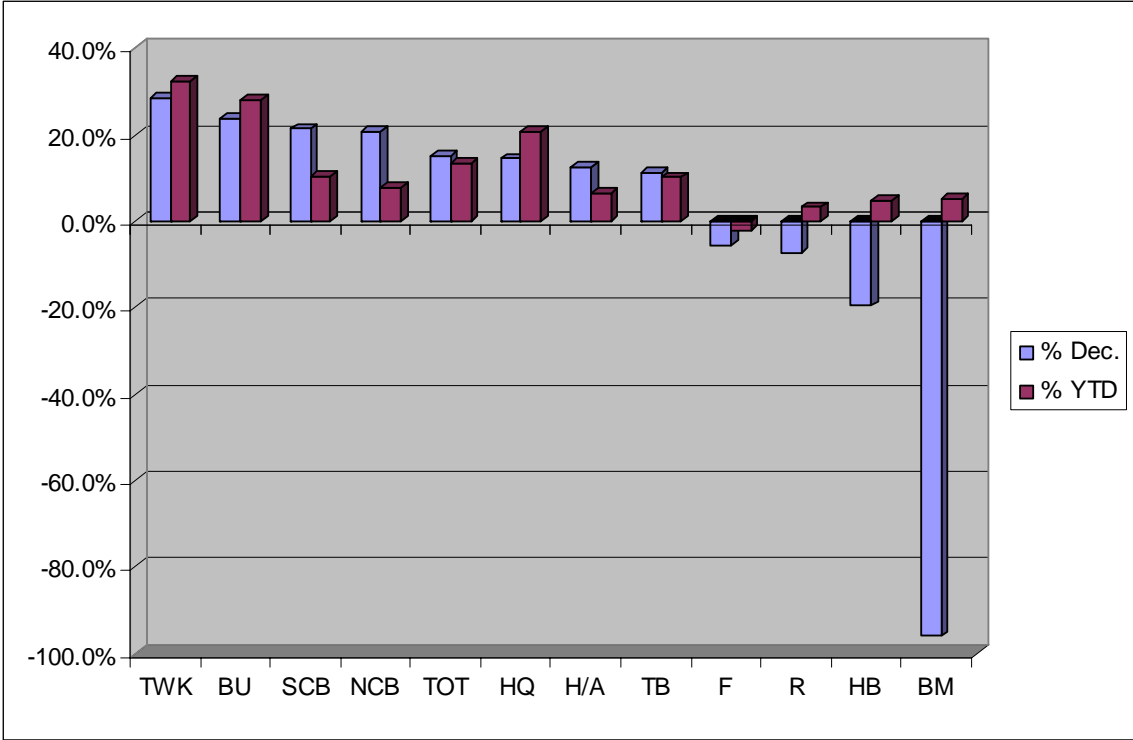
The NCB YS Dept. has programs for all ages from Library Babies to preschool storytimes to a Gigantic Storytime for grades 1-3. For the older set there will be a Tweens Writing Workshop where fourth, fifth, and sixth graders will hear a story and then write one of their own.

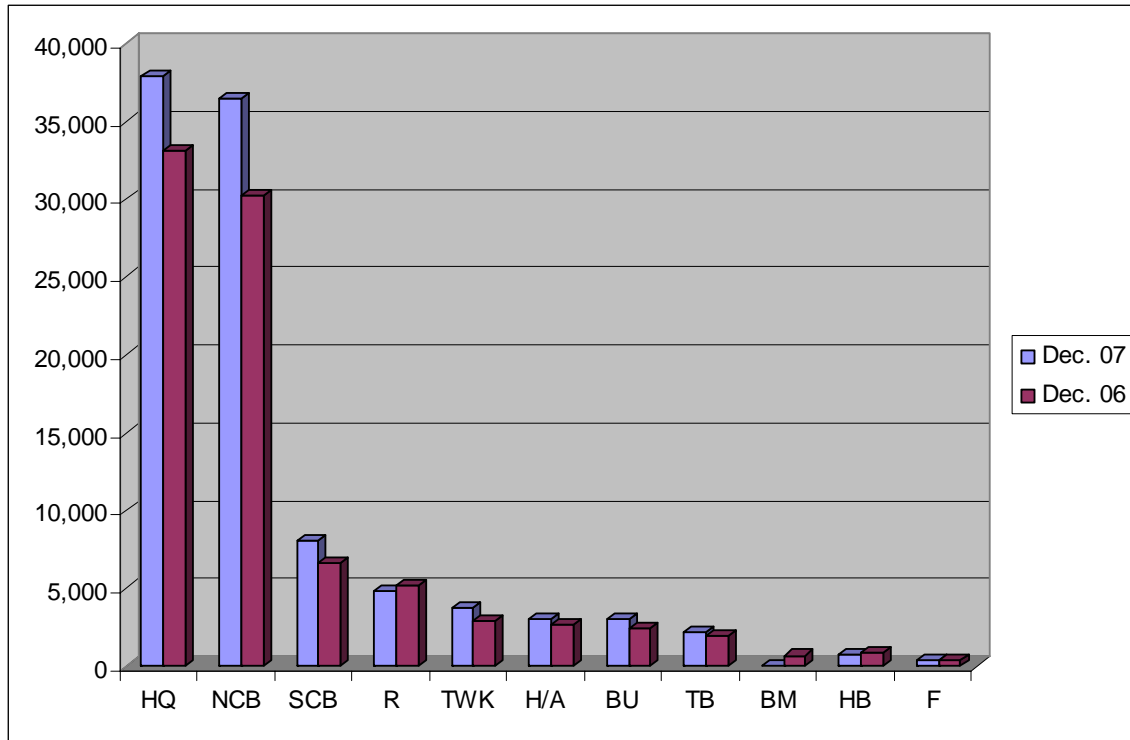
The Teen Cafe Karaoke Night on January 9<sup>th</sup> was a huge success. Sixteen teens gathered to celebrate the New Year with singing and dancing to their favorite tunes Karaoke style.

### Circulation Statistics

	Dec. 07	Nov. 07	% Change	Dec 06	% Change	FYTD 07	Last FYTD	% Change
Headquarters	37,964	41,038	-7.5%	33,180	14.4%	492,127	408,111	20.6%
North County	36,515	39,755	-8.1%	30,283	20.6%	477,894	443,196	7.8%
South County	8,023	8,590	-6.6%	6,615	21.3%	99,280	90,060	10.2%
Bunnvale	3,046	3,073	-0.9%	2,460	23.8%	38,003	29,689	28.0%
Readington	4,842	5,941	-18.5%	5,221	-7.3%	74,631	72,305	3.2%
Holland/Alexandria	2,993	3,576	-16.3%	2,662	12.4%	42,481	39,946	6.3%
Tewksbury	3,751	4,053	-7.5%	2,923	28.3%	44,733	33,811	32.3%
Three Bridges	2,205	2,997	-26.4%	1,983	11.2%	32,032	29,087	10.1%
High Bridge	742	1,047	-29.1%	923	-19.6%	12,201	11,665	4.6%
Frenchtown	366	488	-25.0%	388	-5.7%	6,344	6,481	-2.1%
Bookmobile*	28	1,310	-97.9%	691	-95.9%	12,256	11,652	5.2%
Total	100,475	111,868	-10.2%	87,329	15.1%	1,331,982	1,176,003	13.3%

\*Out of service for the month.





Total circulation for FY 2007 set a new record of 1,331,982. This represented a 13.3% increase over FY 2006 and a two-year increase of 33.9%.

Full Year	FY 2003	FY 2004	FY 2005	FY 2006	FY 2007	1 YR %	2 YR %	3 YR %	4 YR %
HQ	424,132	389,541	241,927	408,111	492,127	20.6%	103.4%	26.3%	16.0%
NCB	386,123	406,928	442,327	443,196	477,894	7.8%	8.0%	17.4%	23.8%
SCB	58,436	73,609	97,421	90,060	99,280	10.2%	1.9%	34.9%	69.9%
BU	22,398	23,007	24,914	29,689	38,003	28.0%	52.5%	65.2%	69.7%
R	47,124	58,896	70,032	72,305	74,631	3.2%	6.6%	26.7%	58.4%
H/A	32,953	34,952	37,690	39,946	42,481	6.3%	12.7%	21.5%	28.9%
TWK	42,764	39,234	27,300	33,811	44,733	32.3%	63.9%	14.0%	4.6%
TB	20,227	18,566	25,932	29,087	32,032	10.1%	23.5%	72.5%	58.4%
HB	9,726	11,064	9,841	11,665	12,201	4.6%	24.0%	10.3%	25.4%
F	6,650	4,974	6,050	6,481	6,344	-2.1%	4.9%	27.5%	-4.6%
BM	10,224	10,066	11,589	11,652	12,256	5.2%	5.8%	21.8%	19.9%
TOT	1,060,757	1,070,837	995,023	1,176,003	1,331,982	13.3%	33.9%	24.4%	25.6%

