

Hunterdon County Library
Director's Report
November 2008

Bookmobile

The vendor delivered our new bookmobile on Wednesday, November 12th. Jim Thatch's exterior graphics look exactly like he designed them. The paint and graphics work is impressive. The overall effect is exciting and inviting. We are pleased with the interior layout and finishes as well, and look forward to putting it in regular service on November 25th. A display and "open house" is planned for a couple of days, both at Headquarters and the North County Branch to allow the public a chance to see it up close.

Our current bookmobile participated in the County's *Touch A Truck* event on Saturday, November 8th. Library Clerk Driver Joan Bonham and Youth Services Librarian Greg Slomczewski staffed it and Assistant Director Floyd Saums visited for awhile in the afternoon. Joan and Greg reported that they had lots of excited visitors, and even checked out 62 books. One patron brought books she had in her car for them to return for her, and several people took library card applications. The Youth Services department had sent a special collection of picture books all about trucks and vehicles of every kind, which were very popular with our young visitors.

North County Branch

The last week in October proved to be an exciting and challenging time for NCB. On Tuesday, October 28th, Hunterdon County was surprised by the first snowstorm of the season. Snow fell, the winds howled, and around noon the Branch experienced a partial power loss. The back of the building, including the circulation workroom, the Youth Services office, and the periodical area and the quiet study room on the second floor, did not have power. All the computers and copiers were down. The elevator could not be used. The decision was made to close at five that day and the staff had the option of going to HQ to work or take their earned time and go home.

On Wednesday, the same conditions prevailed although the schedule included three Halloween storytimes for the morning and an afternoon program on hypnosis. Our dedicated staff wisely chose to stay open in order to do the programs. The programs were well attended and many people, especially those who had no power at home, were grateful to find a place to read, relax, and borrow new books and DVD's. NCB did close at five and many of the staff members went to HQ to work.

The power was restored on Thursday morning and the staff really had to hustle to get all the returned items checked in and all the checked out items, which had been recorded manually, put into Polaris. Everyone worked hard and by afternoon NCB was back to normal!

Reference Dept.

Dept. Head Amanda Philipp has been working with staff to prepare for the 33% cut in funding for reference books and electronic resources in FY 2009. She will be evaluating usage statistics with Rosemary Francone and may conduct a survey of our database users to assist in the decision-making process.

October was *National Reading Group Month*, which included programs for local reading groups by Terry Edwards and a special display by Linda Reynolds.

Circulation Dept.

Circulation Dept. staff did an outstanding job taking care of business during Dept. Head Lee Hughes over three week absence for health reasons.

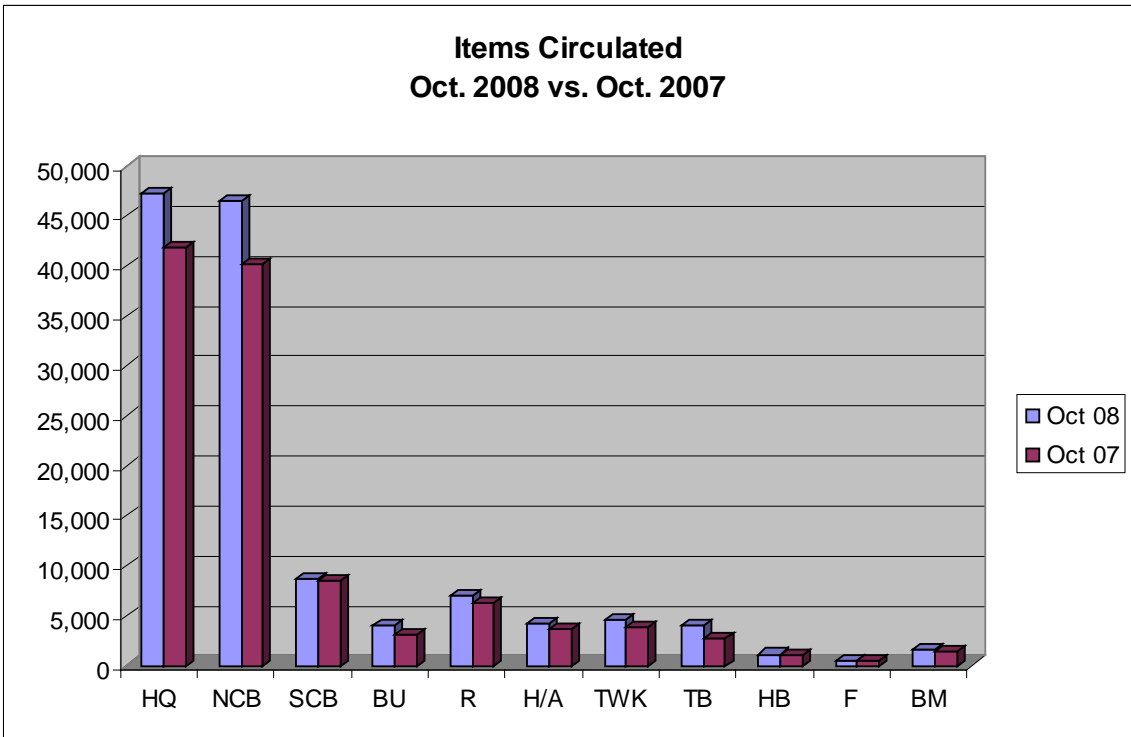
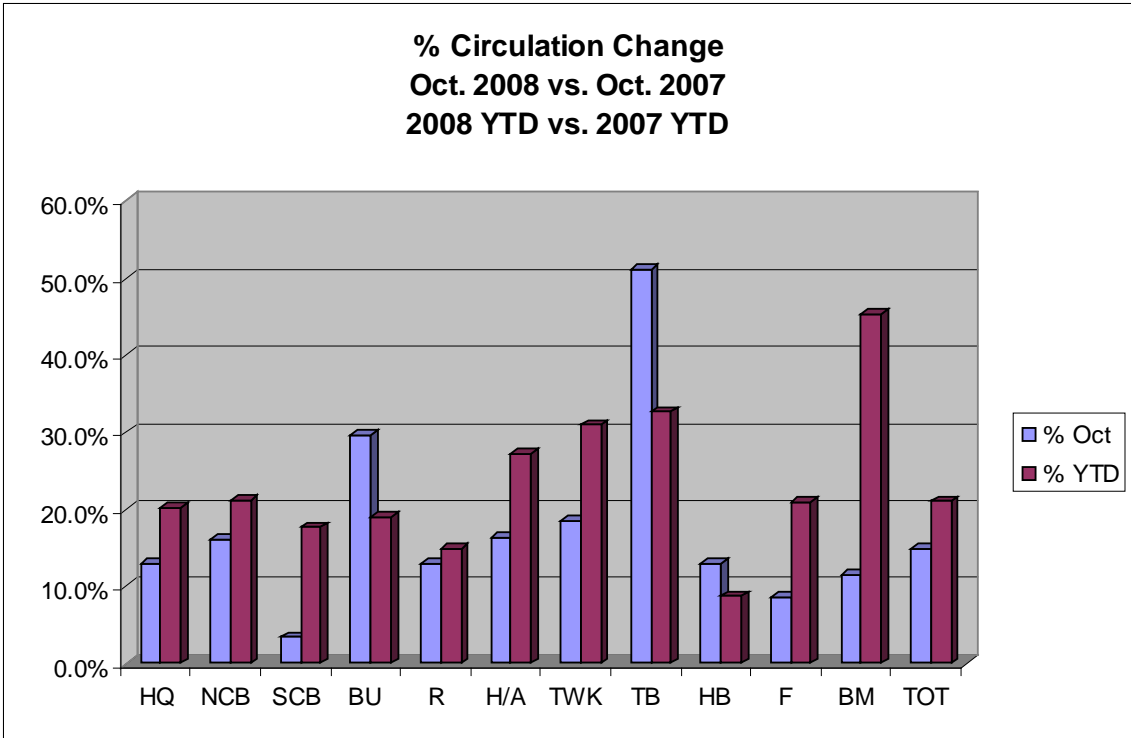
The Dept. is getting ready to launch our new self-checkout system (generously provided by the Friends) which we hope to have in place by Wednesday, November 19th. We anticipate that the addition of this system will help patrons who would prefer to check out their own items.

Requested items pulled from the shelves each day for pickup by patrons remains high at 150 - 200 items a day at HQ and well over 300 system wide!

Circulation Statistics

Circulation for the first ten months of 2008 (1,355,358) already exceeds all of 2007 (1,331,982) by 23,376 (1.8%)! Overall circulation remains up 21.1% compared to last year.

	Oct 08	Sept 08	% Change	Oct 07	% Oct	YTD 08	YTD 07	% YTD
Headquarters	47,198	48,394	-2.5%	41,797	12.9%	496,450	413,125	20.2%
North County	46,557	47,242	-1.4%	40,103	16.1%	486,882	401,624	21.2%
South County	8,715	9,152	-4.8%	8,431	3.4%	97,287	82,667	17.7%
Bunnvale	4,062	3,500	16.1%	3,133	29.7%	37,965	31,884	19.1%
Readington	7,033	7,185	-2.1%	6,224	13.0%	73,313	63,848	14.8%
Holland/Alexandria	4,259	4,539	-6.2%	3,663	16.3%	45,663	35,912	27.2%
Tewksbury	4,558	4,402	3.5%	3,846	18.5%	48,369	36,929	31.0%
Three Bridges	4,078	3,334	22.3%	2,698	51.1%	35,595	26,830	32.7%
High Bridge	1,152	1,078	6.9%	1,020	12.9%	11,318	10,412	8.7%
Frenchtown	587	607	-3.3%	541	8.5%	6,644	5,490	21.0%
Bookmobile	1,646	1,874	-12.2%	1,477	11.4%	15,872	10,918	45.4%
Total	129,845	131,307	-1.1%	112,933	15.0%	1,355,358	1,119,639	21.1%



**Items Circulated through End of Oct.
2008 YTD vs. 2007 YTD**

