

Hunterdon County Library
Director's Report
September 2009

Barbara Riesenfeld to Retire

North County's Branch Manager Barbara Riesenfeld will be retiring on Jan. 1st after more than twenty years with HCL. Barbara has played a key role in the development of county library service in the north dating back to her time as manager of the library in Annandale to her present position overseeing our very active branch library in the Town of Clinton. Although we will certainly miss her, we wish her a well-deserved retirement filled with lots of interesting new experiences and adventures.

Extension Services Dept.

The Extension Services Dept. is already heavily involved with filling school requests, now that the new school year has begun. Many schools depend on our resources, and it appears we may be busier than ever, as budgets shrink in the schools.

The bookmobile is scheduled to go to two community events in the next few weeks. The *Bloomsbury Arts Festival* on September 26th is an event we have participated in for the last several years, and we have been asked to participate again this year. There are always a lot of happy visitors to the bookmobile there.

We have also been invited to participate in a community fair at the Sergeantsville Firehouse on October 7th. We look forward to promoting the library at this new event as well.

Discounts with your Library Card Promotion

September is *National Library Card Sign-Up Month*. The Hunterdon County Library and the Flemington Free Public Library invited local businesses to partner with us as we promote the importance of having a library card and highlight some local businesses in the area.

37 Hunterdon businesses accepted our invitation. HCL produced display signs and brochures to distribute in all our libraries as well as the businesses themselves.

We will be collecting data at the end of the month to evaluate the effectiveness of this promotion. Judging by how quickly patrons are taking the brochures, we expect it to be a very successful venture for HCL and our participating business partners.

Youth Services Dept.

We can now look back on yet another very successful *Summer Reading Club*. We had over 120 programs with approximately 3,000 adults and children attending. Many performers came to HQ and NCB including a magician, musicians, a theater group, a

group from the NJ Aquarium, and a live lizard show as a grand finale. Over 600 kids read more than 28,000 books!

Time and time again this summer, we heard how happy patrons were that we were able to maintain our high quality and large number of programs despite budget cuts. Parents, grandparents, caregivers and children seemed to be especially appreciative and supportive this year.

Teen Café at NCB

Teen Café at NCB had a very successful sixth summer of programming with 170 participants for our six programs. This year's statewide theme for, *Express Yourself @ Your Library*, was carried out in all of the following programs:

Makin' Music with Daria combined international folk music, using culturally diverse instruments with participants making and playing their own didgeridoos. *Radio Revue* was an evening of radio theatre with Elaine Powers and Bill Spear from the Hunterdon Radio Theatre, where Teen participants read and provided sound effects for fractured fairytales, as well as excerpts from Shakespeare. *Edible Expressions* gave young people the opportunity to create works of art they could eat, including marzipan pottery, licorice weaving, and vegetable landscapes. *Rock the Stax with Station 12* was Teen Café's first acoustic rock concert featuring a local Teen band from Glen Gardner. *Teen Idol Talent Night* was the summer blockbuster event, which gave 18 young people the opportunity to display their talents before a room of family and friends. The three mystery judges were professional musicians. Prizes were donated by local businesses. *Improv Anyone* gave young people a chance to engage in acting activities, including creating and dramatizing a story using picture book illustrations as prompts. This program was part of the summer finale, which included a pizza party for Teens who submitted 4 book reviews.

The *Teen Café Summer Reading Club* had 43 registrations, with 23 teens reading four or more books. The *Teen Advisory Board* has reorganized for the 2009-2010 school year with 6 returning board members and 5 new members.

Circulation Dept.

Staff shortages and the resumption of Sunday hours have made it more difficult for staff to be out on the floor doing walk-throughs, shelf reading and shelving. There has been a dramatic increase in thefts of DVDs at HQ and staff are working on ways to minimize this problem.

Technical Services Dept.

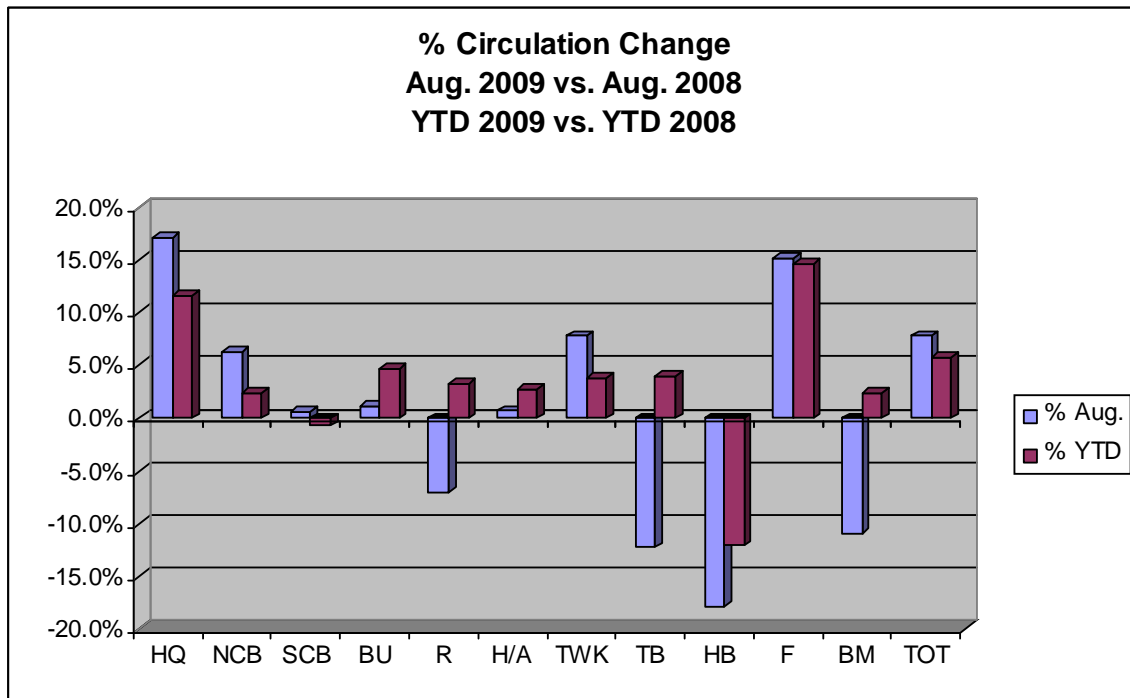
Technical Services staff are working on resolving some problems with labels and indexing that resulted from our recent Polaris upgrade.

HCL Booth at the 2009 Hunterdon County 4-H Fair

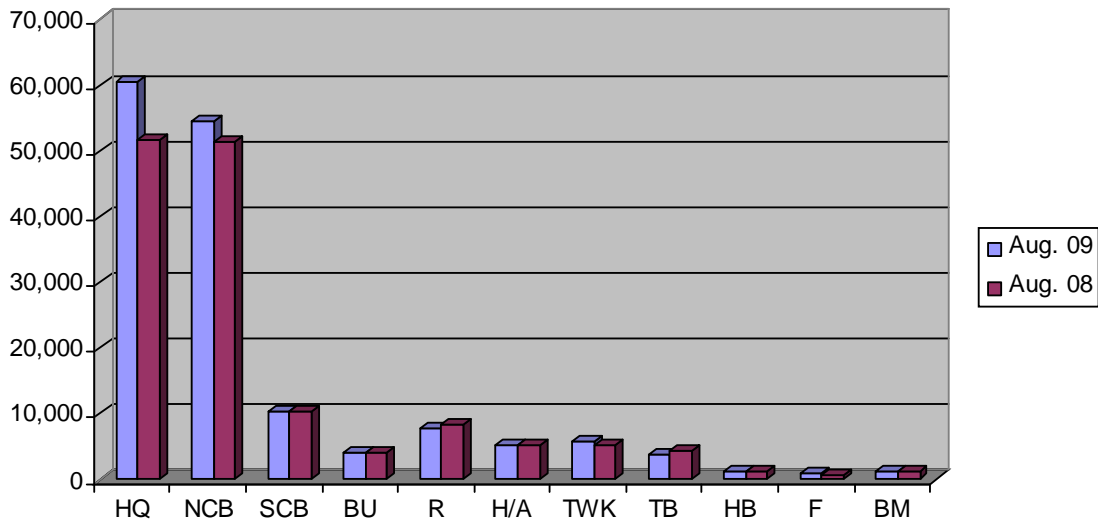
The Fair Committee (Joan Brelsford, Mary Noon-Kozakiewicz, Jim Thatch, and Jennifer Winberry) did an outstanding job organizing and overseeing HCL's booth at this year's 4-H Fair. 24 staff members enthusiastically promoted our services despite almost 6" of rain that week!

Circulation Statistics

	Aug. 09	July 09	% Change	Aug. 08	% Aug.	YTD 09	YTD 08	% YTD
Headquarters	60,418	62,766	-3.7%	51,584	17.1%	447,457	400,858	11.6%
North County	54,636	57,919	-5.7%	51,410	6.3%	402,654	393,083	2.4%
South County	10,444	10,958	-4.7%	10,375	0.7%	78,854	79,420	-0.7%
Bunnvale	4,146	5,000	-17.1%	4,097	1.2%	31,833	30,403	4.7%
Readington	7,700	9,033	-14.8%	8,279	-7.0%	61,010	59,095	3.2%
Holland/Alexandria	5,104	5,318	-4.0%	5,067	0.7%	37,891	36,865	2.8%
Tewksbury	5,636	5,967	-5.5%	5,228	7.8%	40,925	39,409	3.8%
Three Bridges	3,717	4,890	-24.0%	4,235	-12.2%	29,322	28,183	4.0%
High Bridge	1,105	1,324	-16.5%	1,345	-17.8%	7,992	9,088	-12.1%
Frenchtown	880	1,028	-14.4%	764	15.2%	6,252	5,450	14.7%
Bookmobile	1,174	1,382	-15.1%	1,318	-10.9%	12,644	12,352	2.4%
Total	154,960	165,585	-6.4%	143,702	7.8%	1,156,834	1,094,206	5.7%



**Items Circulated
Aug. 2009 vs. Aug. 2008**



**Items Circulated through end of Aug.
2009 YTD vs. 2008 YTD**

