

Hunterdon County Library
Director's Report
January 2010

North County Branch

On January 4th, Amanda Philipp replaced Barbara Riesenfeld as Branch Manager at NCB. Amanda spent time with Barbara, prior to her retirement on Dec. 31st, to get up to speed on procedures and issues at the branch. She has been working closely with NCB staff to ensure a smooth transition as their new manager. She will be spending the majority of her workweek at NCB while continuing to oversee Reference Services for the whole library system.

Reference Dept.

Reference Department staff spent a good deal of time wrapping up orders for the 2009 budget and preparing for changes in staffing and hours at HQ for 2010. Amanda Philipp has delegated some of her HQ workload to other HQ Reference Librarians and will be spending two afternoons a week at HQ.

Circulation Dept.

Lee Ann Comella is now overseeing all scheduling and time cards for Circulation staff at NCB as well as at HQ. HQ Circulation staff are now covering the Readers' Desk on the Lower Level for enhanced security. Lee Ann will be working closely with NCB staff to ensure that Circulation policies and procedures remain the same at both locations.

Extension Services Dept.

Work in the Extension Services Department continued as usual, with six days per week deliveries to the affiliated libraries, and regular service to our bookmobile patrons. Although December used to be a slower month, with patrons occupied with upcoming holidays, this year there was very little letup in the volume of materials being delivered throughout the system.

Employees worked on our ongoing inventory project and helped Technical Services process new books.

Book selection and ordering wrapped up for 2009. We are now ordering for the new budget year, on a limited basis until the budget is approved.

Holiday Snowy Forest

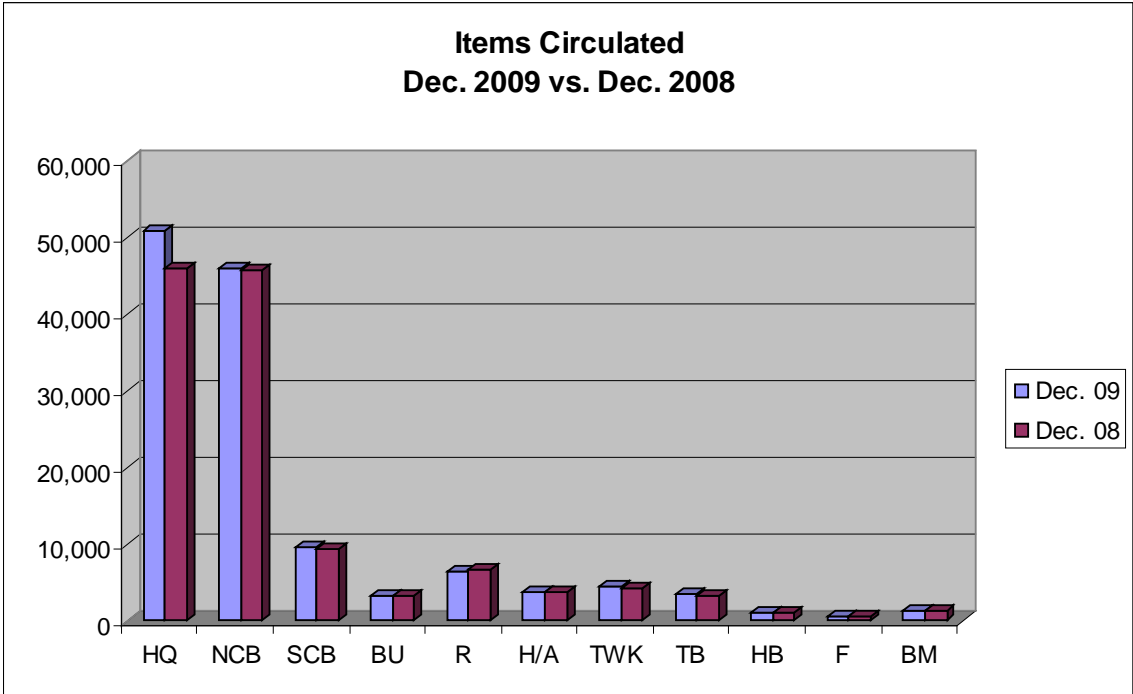
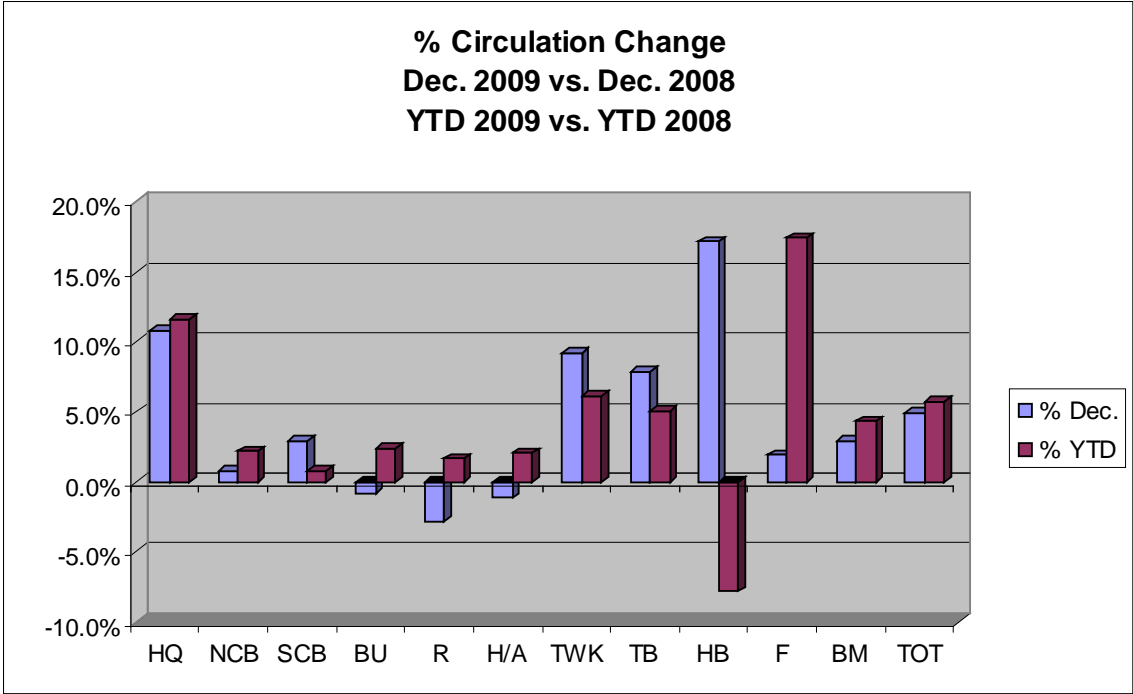
The teddy bear donation drive at HQ during the month of December was a huge success. Over 450 teddy bears and stuffed animals were dropped off on the *Holiday Snowy Forest* display throughout the month. Two local rescue squads and the Hunterdon Medical Center were the beneficiaries who will distribute them to area children. The Public Relations Committee will be considering the possibility of moving the display to the NCB for December 2010.

2009 Programs

HCL's PR Committee put together 145 unique programs at HQ and NCB for a total attendance of 8,499 in 2009. The Committee will be experimenting with Wednesday evening and Saturday afternoon programs to take the place of our Friday evening programs.

Circulation Statistics

	Dec. 09	Nov. 09	% Change	Dec. 08	% Dec.	YTD 09	YTD 08	% YTD
Headquarters	50,890	54,115	-6.0%	45,927	10.8%	660,006	591,045	11.7%
North County	46,111	45,948	0.4%	45,754	0.8%	592,108	579,318	2.2%
South County	9,515	9,205	3.4%	9,248	2.9%	116,710	115,792	0.8%
Bunnvale	3,131	3,096	1.1%	3,158	-0.9%	45,655	44,605	2.4%
Readington	6,503	6,315	3.0%	6,692	-2.8%	87,885	86,441	1.7%
Holland/Alexandria	3,731	4,079	-8.5%	3,775	-1.2%	54,471	53,378	2.0%
Tewksbury	4,576	4,522	1.2%	4,189	9.2%	60,169	56,705	6.1%
Three Bridges	3,494	3,429	1.9%	3,238	7.9%	43,819	41,724	5.0%
High Bridge	1,077	1,025	5.1%	919	17.2%	12,085	13,115	-7.9%
Frenchtown	637	753	-15.4%	625	1.9%	9,153	7,794	17.4%
Bookmobile	1,398	1,534	-8.9%	1,358	2.9%	19,424	18,615	4.3%
Total	131,063	134,021	-2.2%	124,883	4.9%	1,701,485	1,608,532	5.8%



**Items Circulated through end of Dec.
2009 YTD vs. 2008 YTD**

