

Hunterdon County Library
Director's Report
December 2010 & January 2011

Library Services for Unemployed and Underemployed

In October, Amanda Philipp and I met with Stephanie Pierce, Program Coordinator, of the Greater Raritan Workforce Investment Board (GRWIB). GRWIB Director Michele Horst spoke to the Library Commissioners at our November meeting about the services her agency provides to unemployed and underemployed workers. In December, Amanda and I attended a meeting of the GRWIB, also attended by Freeholders William G. Mennen and Robert G. Walton.

HCL Reference staff has created *Job Zone* displays at HQ and NCB with lots of helpful brochures, job hunting materials, and database information. These handouts and brochures have been very popular and will be expanded in the future. We are fully committed to publicizing the services of the GRWIB's One-Stop Career Center and have created links on our website to point job seekers in the right direction. Included in the links are job hunt sites and databases such as *Learning Express* and *Career Accelerator*.

Staff Training & Development

In the last three months, HCL staff has been taking advantage of a number of free webinars offered to the library by various organizations and vendors. Among the subjects covered: E-books, database usage, technology in libraries, Google advanced searching, legal resources and health resources. Library staff were also shown training DVDs on *Reducing Stress* and *Listening Under Pressure*. Mary Noone-Kozakiewicz attended a workshop, *Healthy Aging at Your Library*, conducted by a representative from the National Institutes of Health. Librarians were instructed in the use of health-related websites and teaching techniques to help senior citizens explore the complex subject of health care.

E-books & Audiobooks

Check out Cindy Knight's *Curious about e-books at HCL?* link on our home page for answers to some of the basic questions you might have about downloadable books and the devices you can use to read them. We now have access to roughly 500 e-book titles to choose from in addition to almost 2,000 audiobook titles! They are all available for free, of course, just like all our other services.

Paws to Read

Between January and November, 1,150 children and their parents attended 37 sessions of Dana Neubauer's popular *Paws to Read* programs.

Tax Forms at the Library

Cindy Knight and Karen Kilpatrick are coordinating the display of tax forms this year. Since federal forms are no longer being mailed to individuals, we are expecting more business than in previous years. New Jersey forms will not be sent out to libraries, so we expect to be helping patrons download what they need from the IRS and New Jersey web sites.

Flemington Holiday Parade

For the 3rd year in a row, the Hunterdon County Library Bookmobile participated in the Holiday Parade on Main Street in Flemington in December. Kerri Messinger and Lisa Storm reported that they "received an enthusiastic reception from the crowd. There were shrieks from some of the younger patrons, clapping and waving. They were a great crowd. The temperature was in the low 30s, but everyone bundled up, danced and jumped up and down in an effort to stay warm!"

HCL Monthly Bookmarks

All of the monthly bookmark designs created from October 1987 through December 2010 have been scanned and made into posters. The lower level of our Headquarters Library will be the home of the new HCL Monthly Bookmark gallery. Posters have been made of every bookmark design from October, 1987 to the present. The 279 bookmark designs can also be seen on our web page.

Meeting Room Audio Visual System

BJL AV has finished installing the new Audio and Visual equipment in the Meeting Room and Main Gallery at Headquarters. The system was a gift from the Friends of the Hunterdon County Library.

The system includes an electronic movie screen, DVD with Blu Ray, speakers in both the Meeting Room and Main Gallery, movie camera, and big screen monitor that can be used in several locations for the purpose of promoting library services and programs as well as having the capability to accommodate overflow crowds and popular programs.

Grants & Donations

HCL has received a grant for \$3,000 from the Hunterdon County Cultural and Heritage Commission to help fund musical programs at HQ and NCB. We also received a private donation to pay for the Fred Miller concert series for 2011 at both locations.

Youth Services

The second Fall sessions of storytimes were very well attended at all locations in all age groups.

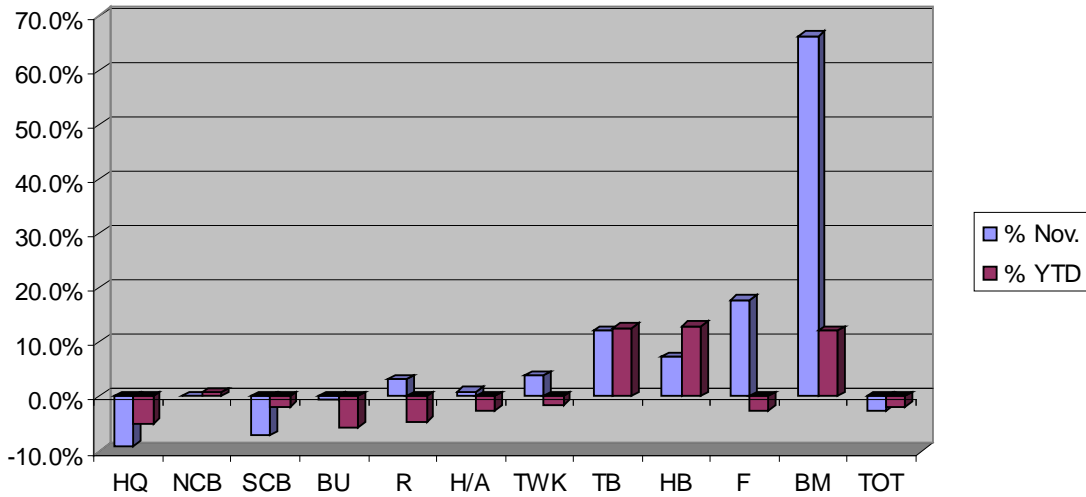
Cub Scout troop and their parents came for a tour of Headquarters. Conley School kindergarteners came for their annual visit to NCB. KinderCAP Pre-K also visited NCB.

HQ and NCB both reported very steady patron traffic on the day after Thanksgiving. Parents commented that they liked having a "calm place to come to that didn't involve crowds and shopping!"

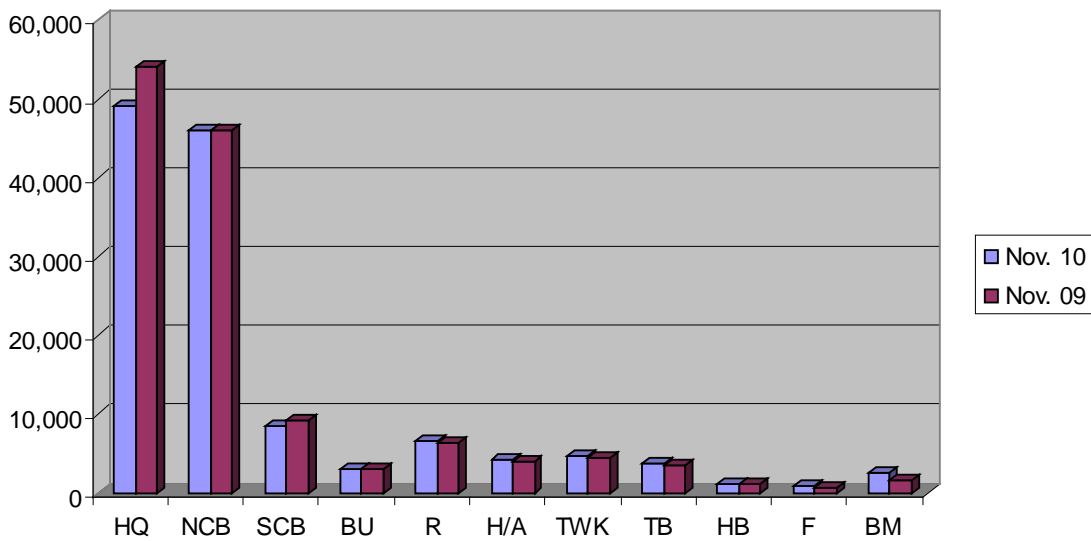
Circulation Statistics for November 2010

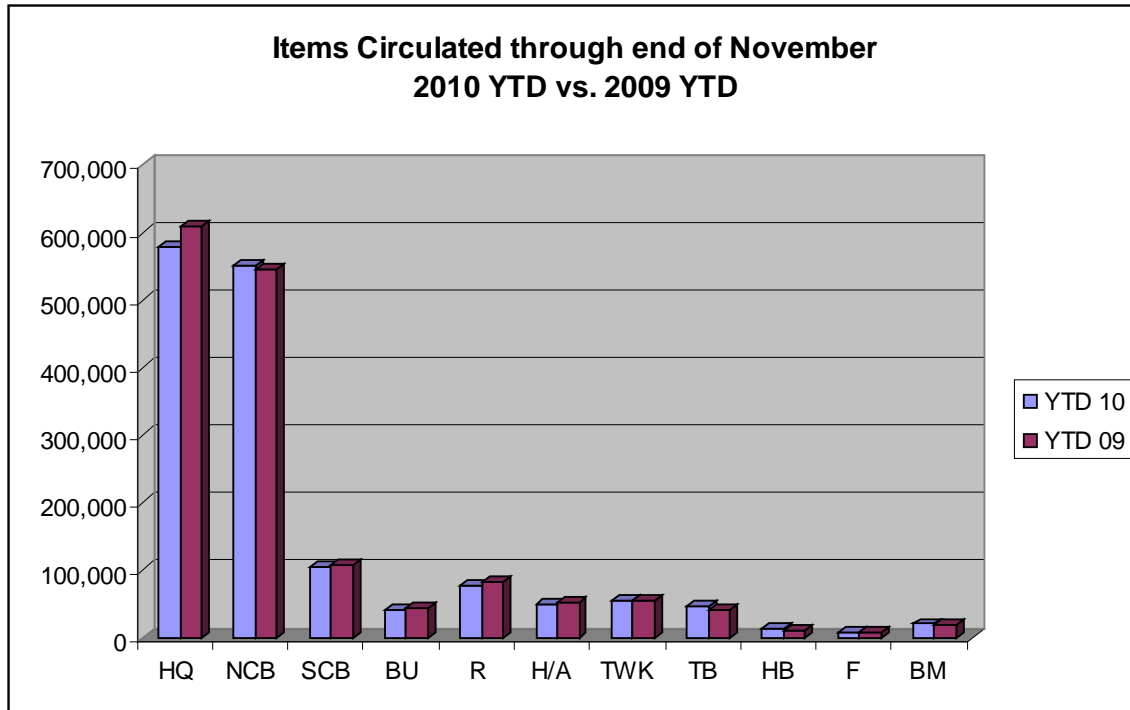
	Nov. 10	Oct. 10	% Change	Nov. 09	% Nov.	YTD 10	YTD 09	% YTD
HQ	49,233	49,972	-1.5%	54,115	-9.0%	579,463	609,116	-4.9%
NCB	45,975	46,936	-2.0%	45,948	0.1%	549,724	545,997	0.7%
SCB	8,538	9,043	-5.6%	9,205	-7.2%	105,104	107,195	-2.0%
BU	3,084	3,800	-18.8%	3,096	-0.4%	40,158	42,524	-5.6%
R	6,515	6,765	-3.7%	6,315	3.2%	77,712	81,382	-4.5%
H/A	4,119	4,531	-9.1%	4,079	1.0%	49,479	50,740	-2.5%
TWK	4,693	4,644	1.1%	4,522	3.8%	54,731	55,593	-1.6%
TB	3,845	4,084	-5.9%	3,429	12.1%	45,378	40,325	12.5%
HB	1,099	1,276	-13.9%	1,025	7.2%	12,443	11,008	13.0%
F	886	719	23.2%	753	17.7%	8,289	8,516	-2.7%
BM	2,552	2,201	15.9%	1,534	66.4%	20,197	18,026	12.0%
TOT	130,539	133,971	-2.6%	134,021	-2.6%	1,542,678	1,570,422	-1.8%

**% Circulation Change
November 2010 vs. November 2009
YTD 2010 vs. YTD 2009**



**Items Circulated
November 2010 vs. November 2009**

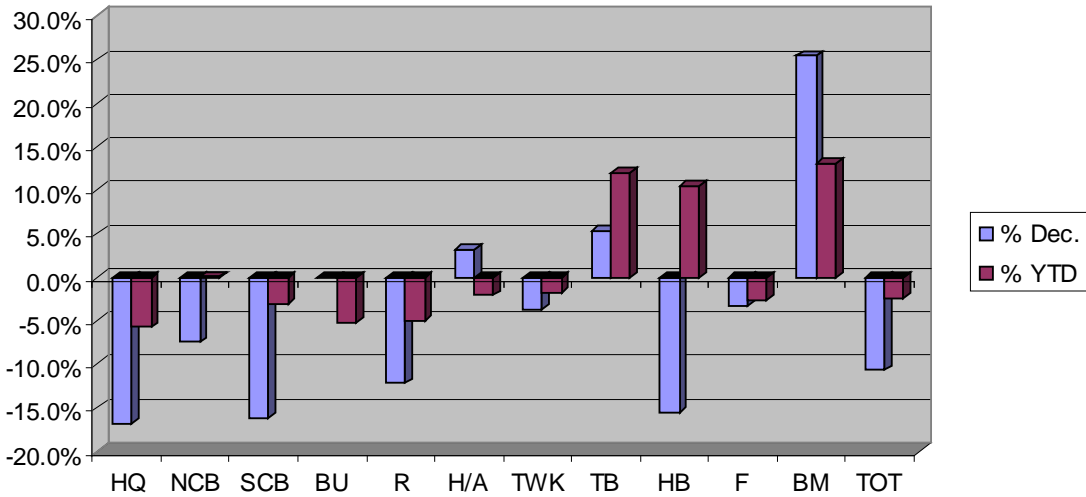




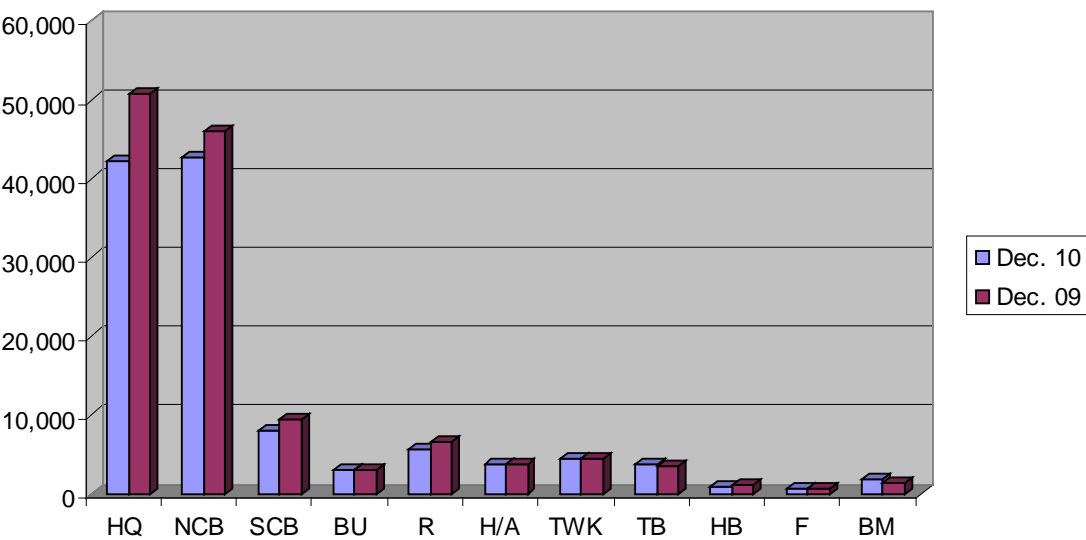
Circulation Statistics for December 2010

	Dec. 10	Nov. 10	% Change	Dec. 09	% Dec.	YTD 10	YTD 09	% YTD
HQ	42,347	49,233	-14.0%	50,890	-16.8%	621,810	660,006	-5.8%
NCB	42,664	45,975	-7.2%	46,111	-7.5%	592,388	592,108	0.0%
SCB	7,977	8,538	-6.6%	9,515	-16.2%	113,081	116,710	-3.1%
BU	3,127	3,084	1.4%	3,131	-0.1%	43,285	45,655	-5.2%
R	5,709	6,515	-12.4%	6,503	-12.2%	83,421	87,885	-5.1%
H/A	3,849	4,119	-6.6%	3,731	3.2%	53,328	54,471	-2.1%
TWK	4,407	4,693	-6.1%	4,576	-3.7%	59,138	60,169	-1.7%
TB	3,682	3,845	-4.2%	3,494	5.4%	49,060	43,819	12.0%
HB	910	1,099	-17.2%	1,077	-15.5%	13,353	12,085	10.5%
F	616	886	-30.5%	637	-3.3%	8,905	9,153	-2.7%
BM	1,754	2,552	-31.3%	1,398	25.5%	21,951	19,424	13.0%
TOT	117,042	130,539	-10.3%	131,063	-10.7%	1,659,720	1,701,485	-2.5%

**% Circulation Change
December 2010 vs. December 2009
YTD 2010 vs. YTD 2009**



**Items Circulated
December 2010 vs. December 2009**



**Items Circulated through end of December
2010 YTD vs. 2009 YTD**

